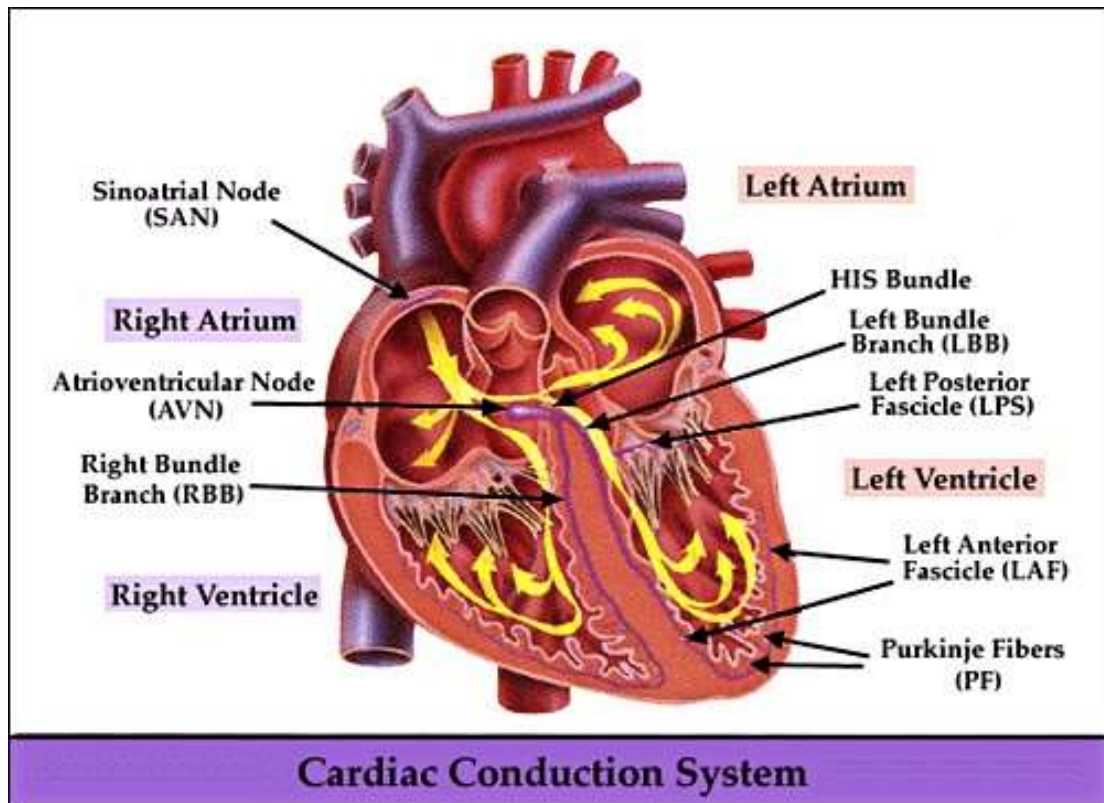


The Conduction System of the Heart



The action potential is originating in the Sino Atrial Node (SA node). It then travels down the atria to Atria-Ventricular node (AV node), depolarizing atrial myocardium and resulting in the contraction of both atria.

From AV node, the impulse is moving down the HIS Bundle and then to both Bundle Branches and Purkinje fibres, resulting in depolarization and contraction of both ventricles.